

WZT SB DIE RAILS

SWIVEL BASE STYLE

Application :

The rails are designed to extend a bolster for die change operation. The rails make it possible to roll the die out of the bolster; they can be a bridge between the bolster and a die cart. The WZT SB rails require minimum time and effort to be set in work position.

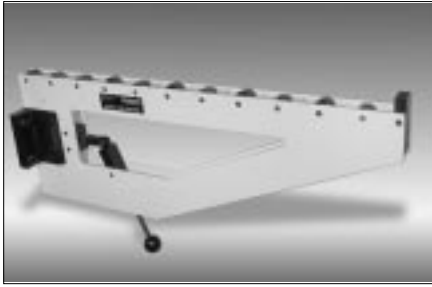
Features:

- Strong welded profile
- Stores easily, folded on press

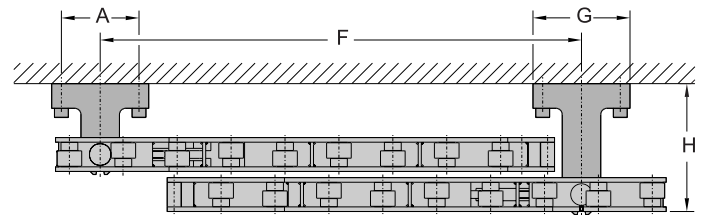
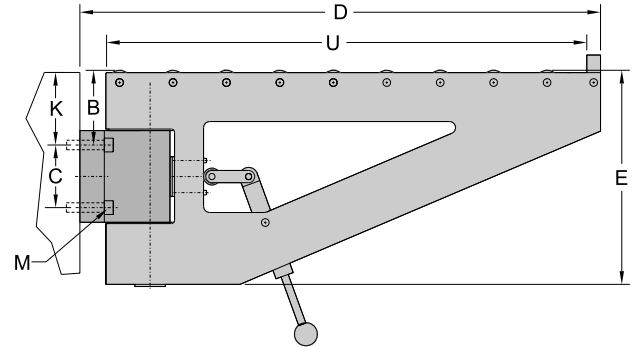
- Hardened cam rollers
- Flip down stop - for security
- Easy change between work and idle position

Description:

The (SB) swivel base style, are permanently fixed on the bolster plate. There are two indexed positions: working and neutral, in order to allow clear access to the press. The rails are positively locked when they are open for die loading. Then, in order to move them into idle position, the releasing arm has to be pressed down.



WZT SB die rails



TYPE	Load cap.	Dimensions										
		'U'	'A'	'B'	'C'	'D'	'E'	'F'	'G'	'H'	'M'	
UNIT	lbs	in	in	in	in	in	in	in	in	in	in	
WZT-5	WZT5/500	1100	19.68	4.00	4.447	4.00	22.688	11.95	19.50	5.00	7.88	1/2-13
	WZT5/800	1100	31.49	4.00	4.447	4.00	35.000	11.95	31.81	5.00	7.88	1/2-13
	WZT5/1000	1100	39.37	4.00	4.447	4.00	42.375	11.95	39.19	5.00	7.88	1/2-13
WZT-10	WZT10/500	2200	19.68	4.00	4.447	4.00	22.688	11.95	19.50	5.00	7.88	1/2-13
	WZT10/800	2200	31.49	4.00	4.447	4.00	35.000	11.95	31.81	5.00	7.88	1/2-13
	WZT10/1000	2200	39.37	4.00	4.447	4.00	42.375	11.95	39.19	5.00	7.88	1/2-13
WZT-15	WZT15/800	3300	31.49	6.30	6.108	5.118	34.750	17.50	31.06	7.875	10.38	3/4-10
	WZT15/1000	3300	39.37	6.30	6.108	5.118	42.625	17.50	38.94	7.875	10.38	3/4-10
	WZT15/1250	3300	49.21	6.30	6.108	5.118	52.875	17.50	49.19	7.875	10.38	3/4-10
WZT-20	WZT20/800	4400	31.49	6.30	6.108	5.118	34.750	17.50	31.06	7.875	10.38	3/4-10
	WZT20/1000	4400	39.37	6.30	6.108	5.118	42.625	17.50	38.94	7.875	10.38	3/4-10
	WZT20/1250	4400	49.21	6.30	6.108	5.118	52.875	17.50	49.19	7.875	10.38	3/4-10
WZT-30	WZT30/800	6600	31.49	6.30	6.108	5.118	34.750	17.50	31.06	7.875	10.38	3/4-10
	WZT30/1000	6600	39.37	6.30	6.108	5.118	42.625	17.50	38.94	7.875	10.38	3/4-10
	WZT30/1250	6600	49.21	6.30	6.108	5.118	52.875	17.50	49.19	7.875	10.38	3/4-10
WZT-40	WZT40/800	8800	31.49	6.30	6.108	5.118	34.750	17.50	31.06	7.875	10.38	3/4-10
	WZT40/1000	8800	39.37	6.30	6.108	5.118	42.625	17.50	38.94	7.875	10.38	3/4-10
	WZT40/1250	8800	49.21	6.30	6.108	5.118	52.875	17.50	49.19	7.875	10.38	3/4-10



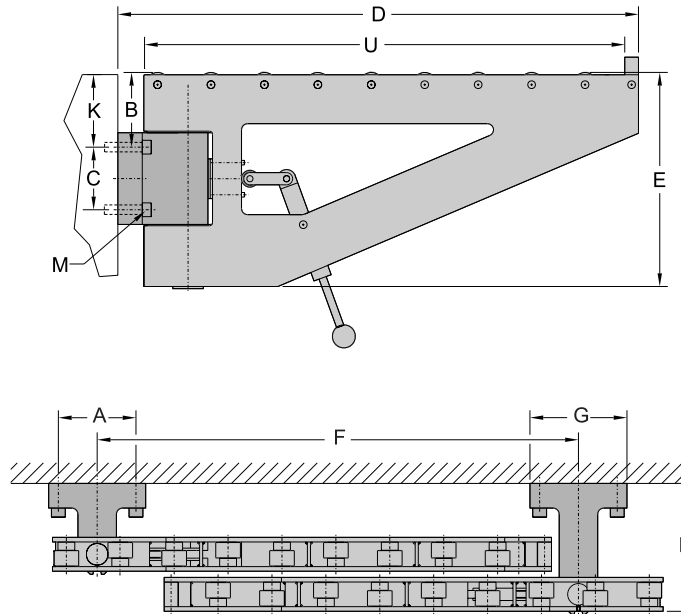
Note:
Dimension 'K' must be adjusted for customer's equipment i.e. -with die lifters use 'L'
-without die lifters ignore 'L'

K=B-L-.02 [in]

L[in]- Lift over the bolster provided by existing die lifters in the raised position

WZT SB DIE RAILS

SWIVEL BASE STYLE



TYPE	Load cap.	Dimensions										
		'U'	'A'	'B'	'C'	'D'	'E'	'F'	'H'	'G'	'M'	
UNIT	lbs	in	in	in	in	in	in	in	in	in		
WZT-60	WZT60/1000	13200	40.40	6.694	6.614	5.906	44.03	17.50	40.594	11.81	8.88	3/4-10
	WZT60/1300	13200	51.18	6.694	6.614	5.906	54.81	17.50	51.374	11.81	8.88	3/4-10
	WZT60/1600	13200	62.99	6.694	6.614	5.906	66.75	17.50	63.312	11.81	8.88	3/4-10
	WZT60/2000	13200	78.74	6.694	6.614	5.906	82.36	17.50	78.92	11.81	8.88	3/4-10
	WZT60/2500	13200	98.42	6.694	6.614	5.906	102.04	17.50	98.60	11.81	8.88	3/4-10
WZT-80	WZT80/1000	17600	40.40	6.694	6.614	5.906	44.03	17.50	40.594	11.81	8.88	3/4-10
	WZT80/1300	17600	51.18	6.694	6.614	5.906	54.81	17.50	51.374	11.81	8.88	3/4-10
	WZT80/1600	17600	62.99	6.694	6.614	5.906	66.75	17.50	63.312	11.81	8.88	3/4-10
	WZT80/2000	17600	78.74	6.694	6.614	5.906	82.36	17.50	78.92	11.81	8.88	3/4-10
	WZT80/2500	17600	98.42	6.694	6.614	5.906	102.04	17.50	98.60	11.81	8.88	3/4-10
WZT-120	WZT120/1250	26400	49.21	7.50	7.750	3.875	54.11	20.75	50.86	13.81	9.50	1"-8
	WZT120/1600	26400	62.99	7.50	7.750	3.875	67.89	20.75	64.64	13.81	9.50	1"-8
	WZT120/2000	26400	78.74	7.50	7.750	3.875	83.64	20.75	80.39	13.81	9.50	1"-8
	WZT120/2500	26400	98.42	7.50	7.750	3.875	103.32	20.75	100.07	13.81	9.50	1"-8
WZT-150	WZT150/1250	33000	49.21	7.50	7.750	3.875	54.11	20.75	50.86	13.81	9.50	1"-8
	WZT150/1600	33000	62.99	7.50	7.750	3.875	67.89	20.75	64.64	13.81	9.50	1"-8
	WZT150/2000	33000	78.74	7.50	7.750	3.875	83.64	20.75	80.39	13.81	9.50	1"-8
	WZT150/2500	33000	98.42	7.50	7.750	3.875	103.32	20.75	100.07	13.81	9.50	1"-8



Note:
Dimension 'K' must be adjusted for customer's equipment i.e. -with die lifters use 'L' -without die lifters ignore 'L'

K=B-L-.02 [in]

L[in]- Lift over the bolster provided by existing die lifters in the raised position