

WZT DSB DIE RAILS

DOUBLE SWIVEL STYLE

Application :

The double swivel base style rails are used to load and unload the tools on a press. The rails are supplied and used as a pair. Each rail can be folded in half for easy storage. This feature makes them practical when space surrounding the press is limited.

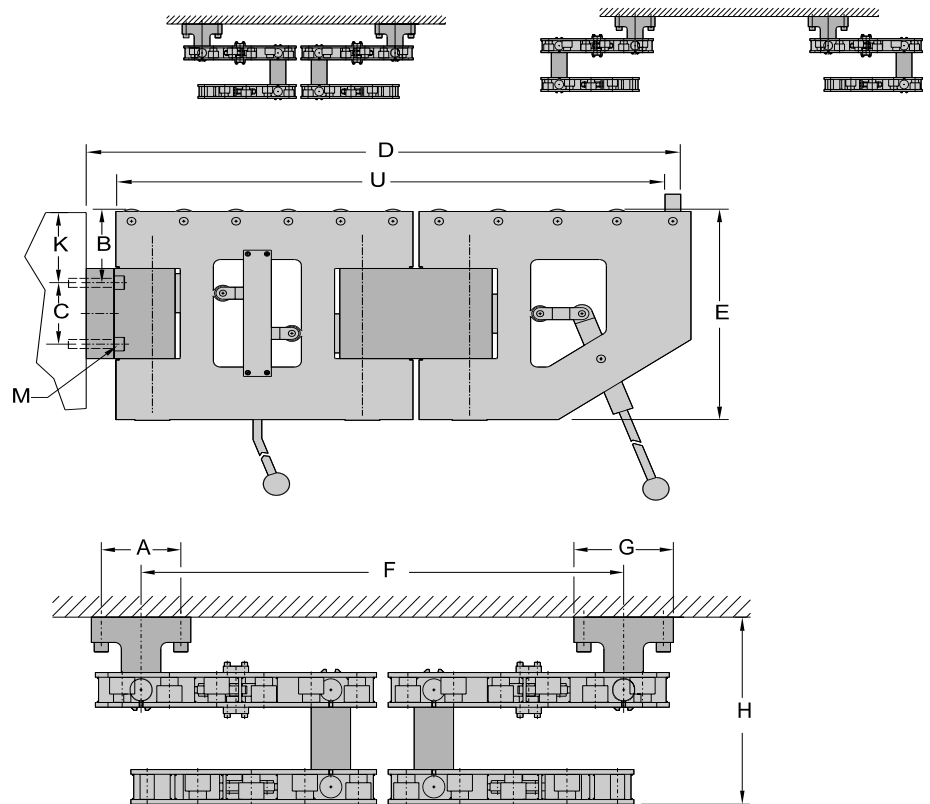
Features:

- Strong welded profile
- Easy change between work and idle position
- Easy storage of longer rails

- Flip down stop - for security

Description:

The rails are mounted on brackets, which are permanently attached to the bolster plate. There are two indexed positions: working and neutral, in order to allow clear access to the press. The rails are positively locked when they are open for die loading. Then, in order to move them into idle position, the releasing arm has to be pressed down. The DSB can be stored in two different positions (shown below)



TYPE	Load cap.	Dimensions									
		'U'	'A'	'B'	'C'	'D'	'E'	'F'	'G'	'H'	'M'
UNIT	lbs	in	in	in	in	in	in	in	in	in	
WZT5/1000	1100	39.37	4.00	4.447	4.00	42.375	11.95	35.00	5.00	10.0	1/2-13
WZT10/1000	2200	39.37	4.00	4.447	4.00	42.375	11.95	35.00	5.00	10.0	1/2-13
WZT15/1000	3300	39.37	6.30	6.108	5.118	42.625	17.50	35.15	7.875	13.0	3/4-10
WZT15/1250	3300	49.21	6.30	6.108	5.118	52.875	17.50	41.88	7.875	13.0	3/4-10
WZT20/1000	4400	39.37	6.30	6.108	5.118	42.625	17.50	35.15	7.875	13.0	3/4-10
WZT20/1250	4400	49.21	6.30	6.108	5.118	52.875	17.50	41.88	7.875	13.0	3/4-10
WZT30/1000	6600	39.37	6.30	6.108	5.118	42.625	17.50	35.15	7.875	13.0	3/4-10
WZT30/1250	6600	49.21	6.30	6.108	5.118	52.875	17.50	41.88	7.875	13.0	3/4-10
WZT40/1000	8800	39.37	6.30	6.108	5.118	42.625	17.50	35.15	7.875	13.0	3/4-10
WZT40/1250	8800	49.21	6.30	6.108	5.118	52.875	17.50	41.88	7.875	13.0	3/4-10
WZT60/2000	13200	78.74	6.694	6.614	5.906	82.36	17.50	72.00	11.81	15.0	3/4-10
WZT60/2500	13200	98.42	6.694	6.614	5.906	102.04	17.50	91.50	11.81	15.0	3/4-10
WZT80/2000	13200	78.74	6.694	6.614	5.906	82.36	17.50	72.00	11.81	15.0	3/4-10
WZT80/2500	13200	98.42	6.694	6.614	5.906	102.04	17.50	91.50	11.81	15.0	3/4-10



Note:
Dimension 'K' must be adjusted for customer's equipment i.e. -with die lifters use 'L'
-without die lifters ignore 'L'

K=B-L-.02 [in]

L[in]- Lift over the bolster provided by existing die lifters in the raised position