

# WZT CSB DIE RAILS

COMBINATION SWIVEL STYLE



**Application :**

The combination swivel base style rails are designed to extend a bolster for die change operation. The rails make it possible to roll the die out of the bolster, they can be a bridge between the bolster and a die cart. They can be stored folded in a very compact envelope.

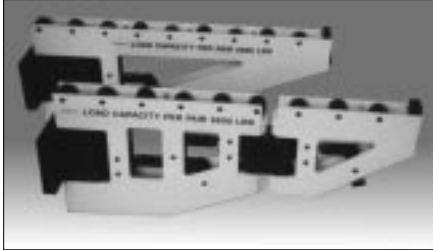
**Feature:**

- Accomodate 'closer' mounting center lines
- Strong welded profile
- Easy change between work and idle position

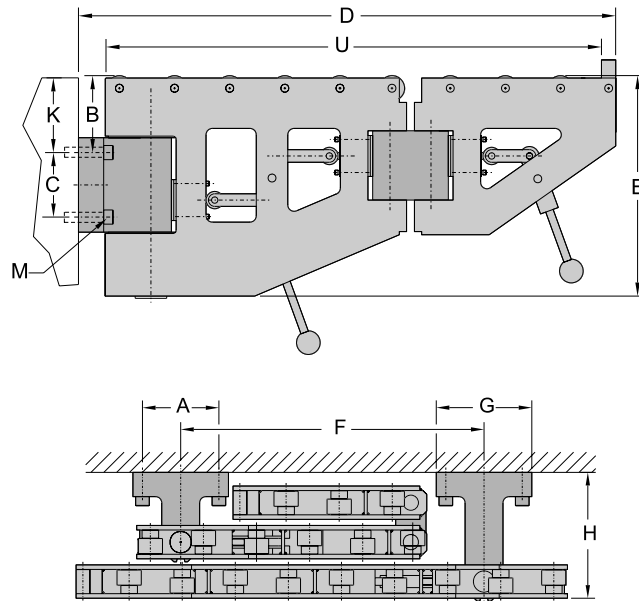
- Easy storage of longer rails
- Flip down stop - for security

**Description:**

The (CSB) combination swivel base style are permanently fixed to the bolster plate. There are two indexed positions: working and neutral, in order to allow clear access to the press. The rails are positively locked when they are open for die loading. Then, in order to move them into idle position, the releasing arm has to be pressed down. To prevent the die from traveling off the rails a safety flip dead stop is applied.



WZT CSB die rails



TYPE	Load cap.	Dimensions									
		'U'	'A'	'B'	'C'	'D'	'E'	'F'	'G'	'H'	'M'
UNIT	lbs	in	in	in	in	in	in	in	in	in	
WZT5/800	1100	31.49	4.00	4.447	4.00	35.000	11.95	21.0	5.00	7.88	1/2-13
WZT5/1000	1100	39.37	4.00	4.447	4.00	42.375	11.95	25.0	5.00	7.88	1/2-13
WZT10/800	2200	31.49	4.00	4.447	4.00	35.000	11.95	21.0	5.00	7.88	1/2-13
WZT10/1000	2200	39.37	4.00	4.447	4.00	42.375	11.95	25.0	5.00	7.88	1/2-13
WZT15/800	3300	31.49	6.30	6.108	5.118	34.750	17.50	21.0	7.875	10.38	3/4-10
WZT15/1000	3300	39.37	6.30	6.108	5.118	42.625	17.50	25.0	7.875	10.38	3/4-10
WZT15/1250	3300	49.21	6.30	6.108	5.118	52.875	17.50	30.0	7.875	10.38	3/4-10
WZT20/800	4400	31.49	6.30	6.108	5.118	34.750	17.50	21.0	7.875	10.38	3/4-10
WZT20/1000	4400	39.37	6.30	6.108	5.118	42.625	17.50	25.0	7.875	10.38	3/4-10
WZT20/1250	4400	49.21	6.30	6.108	5.118	52.875	17.50	30.0	7.875	10.38	3/4-10
WZT30/800	6600	31.49	6.30	6.108	5.118	34.750	17.50	21.0	7.875	10.38	3/4-10
WZT30/1000	6600	39.37	6.30	6.108	5.118	42.625	17.50	25.0	7.875	10.38	3/4-10
WZT30/1250	6600	49.21	6.30	6.108	5.118	52.875	17.50	30.0	7.875	10.38	3/4-10
WZT40/800	8800	31.49	6.30	6.108	5.118	34.750	17.50	21.0	7.875	10.38	3/4-10
WZT40/1000	8800	39.37	6.30	6.108	5.118	42.625	17.50	25.0	7.875	10.38	3/4-10
WZT40/1250	8800	49.21	6.30	6.108	5.118	52.875	17.50	30.0	7.875	10.38	3/4-10



**Note:**  
Dimension 'K' must be adjusted for customer's equipment i.e. -with die lifters use 'L'  
-without die lifters ignore 'L'

**K=B-L-.02 [in]**

L[in]- Lift over the bolster provided by existing die lifters in the raised position