

WZSXD CLAMP

ADJUSTABLE HEIGHT CLAMPS

Application:

The adjustable clamp enables clamping non standardized dies, extending customer ability in clamping diferent sizes of die shoes. Simple design offers high clamping force in combination with a compact, lightweight style.

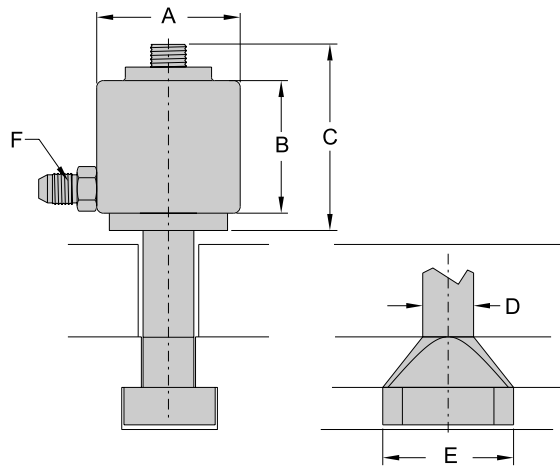
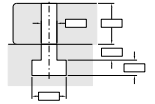
Features:

- Single acting - spring return
- Ability to clamp different size die shoes
- SAE-ORB porting for reusable, leakproof operation up to 6000 psi

- Application flexibility
- Suitable for retrofitting
- Locking plate for 'T' shaft orientation

To Order:

Note the type of clamp. Please provide information requested below, by filling out the form on page 48. Specifically for that type of clamp, two clamping height dimintions are needed, for the biggest and the smallest die shoe thickness.



Note: Maximum gap ('G' dim) before clamping should not exceed 0.150 inches.

| TYPE | Clamping force @3500psi | Total stroke | Total stroke w/adjust. | Dimension | | | | | | Fitting |
|----------|-------------------------|--------------|------------------------|-----------|-------|-------|-------|-------|------|----------|
| | | | | 'A' | 'B' | 'C' | | 'D' | 'E' | 'F' |
| | | | | | | min | max | | | |
| UNIT | lbs | in | in | in | in | in | in | in | in | |
| WZSXD40 | 8800 | .32 | .600 | 2.559 | 2.362 | 3.278 | 3.559 | .827 | 2.00 | GFF5X-46 |
| WZSXD70 | 15400 | .32 | .750 | 3.150 | 2.756 | 3.641 | 3.922 | .905 | 2.25 | GFF5X-66 |
| WZSXD100 | 22000 | .47 | .750 | 3.936 | 3.622 | 5.182 | 5.463 | 1.063 | 2.5 | GFF5X-66 |
| WZSXD150 | 33000 | .47 | .750 | 4.528 | 3.622 | 5.182 | 5.463 | 1.182 | 2.75 | GFF5X-66 |