

WZSXA CLAMP

Application:

These clamps are ideal for fully automated QDC systems, because manual positioning is eliminated. The clamps are used with U-slots for die clamps already in existence, or the U-slots can be easily machined into dieshoes, adapter plates, parallels/risers. Limited space conditions inside the press or the die, restrict the size of the clamps.

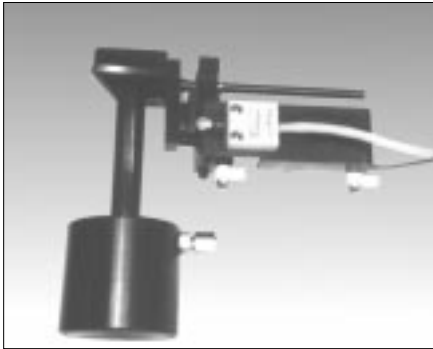
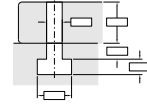
- Sensor protected
- Suitable for retrofitting

To Order:

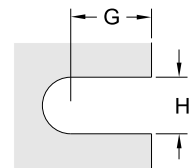
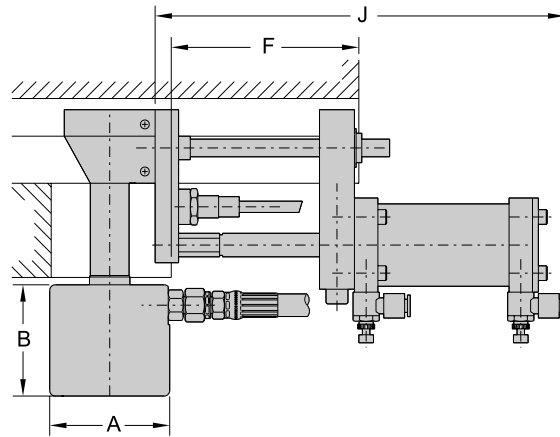
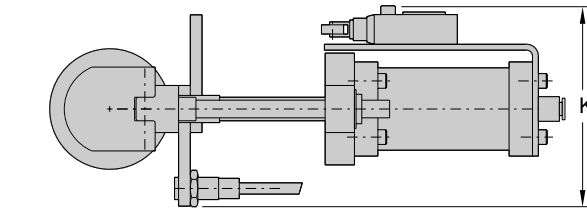
Note the type of clamp. Clamps are listed by clamping force, so please provide the information requested below by filling out the form on page 48.

Features:

- Automatic positioning
- SAE-ORB porting for reusable, leakproof operation up to 6000 psi



WZSXA clamp



TYPE	Clamping force @3500 psi	Total stroke	Dimensions							Min. requirments			Air cylider stoke
			'A'	'B'	'C'	'D'	'E'	'J'	'K'	'F'	'G'	'H'	
UNIT	lbs	in	in	in	in	in	in	in	in	in	in	in	in
WZSX20A	4400	.32	2.165	2.165	.708	.669	1.75	8.50	4.2	3.75	1.875	.750	2.50
WZSX40A	8800	.32	2.559	2.362	.865	.827	2.00	9.00	4.2	4.0	2.0	1.00	2.75
WZSX70A	15400	.32	3.150	2.756	1.019	.905	2.25	10.5	4.2	5.0	2.25	1.10	3.75