

WZSX CLAMP

CYLINDER STYLE

Application:

High clamping force in combination with a compact, lightweight design are the main characteristics of this type of clamp. This clamp is by far the most popular and is applicable when tools are prepared with U-slots for die clamps, that match the press 'T' slot location in existence. U-slots can be also easily machined into die shoes, adapter plates, parallels/risers. Limited space conditions inside the press or the die, restrict the size of the clamps. Six standard sizes are available to cover a wide range of required clamping forces.

Features:

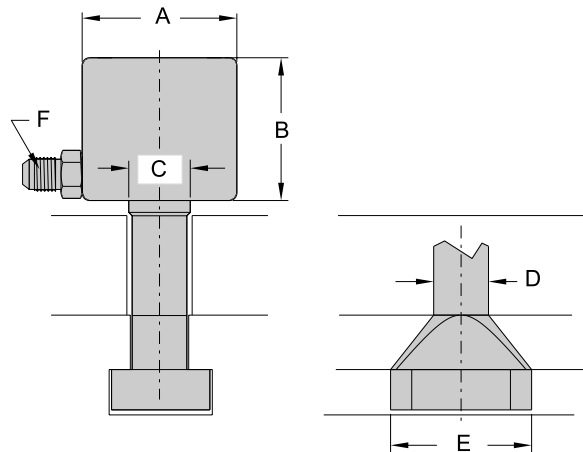
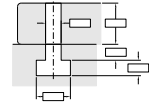
- Durable, simple design
- SAE-ORB porting for reusable, leakproof operation up to 6000 psi
- Optional hanger
- Suitable for retrofitting

To Order:

Note the type of clamp. Clamps are listed by clamping force, so please provide the information requested below by filling out the form on page 48.



WZSX clamp



TYPE	Clamping force @3500 psi	Total stroke	Dimensions					Fitting
			'A'	'B'	'C'	'D'	'E'	
UNIT	lbs	in	in	in	in	in	in	
WZSX20	4400	.32	2.165	2.165	.708	.669	1.75	GFF5X-44
WZSX40	8800	.32	2.559	2.362	.865	.827	2.00	GFF5X-46
WZSX70	15400	.32	3.150	2.756	1.019	.905	2.25	GFF5X-66
WZSX100	22000	.47	3.936	3.622	1.260	1.063	2.5	GFF5X-66
WZSX150	33000	.47	4.528	3.622	1.411	1.182	2.75	GFF5X-66