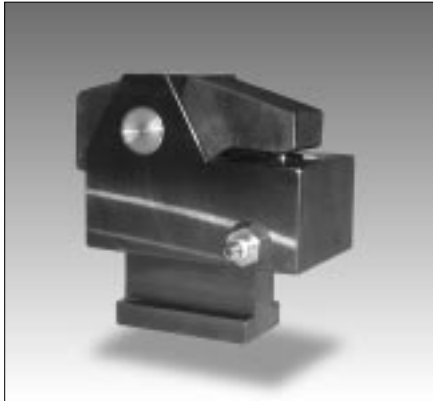


Removable clamps

WZS CLAMP LEVER STYLE



WZS clamp

Application:

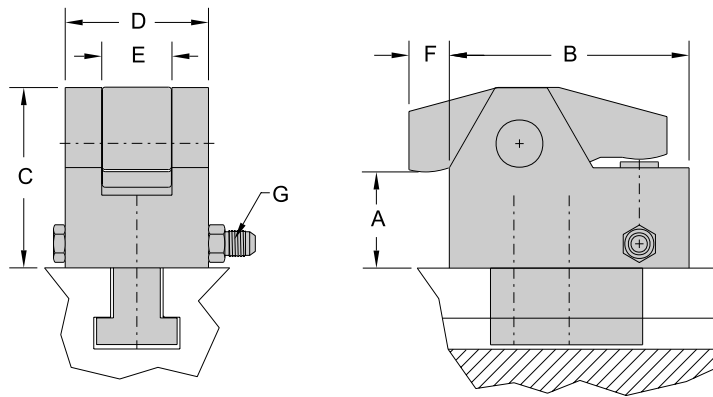
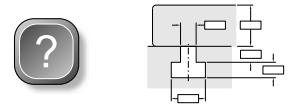
This hydro mechanical clamp has low profile design. The clamp requires minimum space within the die, because it sits outside of the die and requires only one square inch of area for clamping. The clamping height at the clamping location must be standardized. The WZS clamps usually are used with T-slots to accommodate a wide variety of die sizes. They can also be fastened by screws.

Features:

- Suitable for narrow clamping edges
- Solid - one piece body
- SAE-ORB porting for reusable, leakproof operation up to 6000 psi
- Hydraulic piston protected by wiper seal
- Optional hangar
- Suitable for retrofitting

To Order:

Note the type of clamp. Clamps are listed by clamping force, so please provide the information requested below by filling out the form on page 48.



TYPE	Clamping force @3500psi	Total stroke	Dimensions						Fitting
			'A'	'B'	'C'	'D'	'E'	'F'	
UNIT	lbs	in	in	in	in	in	in	in	
WZS8	1800	.25	1 1/4	2.76	2.56	2.16	1.0	1.0	GFF5X-44
WZS20	4400	.25	1 9/16	4.33	3.15	2.56	1.3	1.0	GFF5X-44
WZS40	8800	.25	2 3/8	5.12	3.82	3.070	1.5	1.0	GFF5X-64
WZS70	15400	.28	3 1/8	5.71	4.33	3.860	1.89	1.0	GFF5X-66
WZS100	22000	.28	3 1/8	7.68	4.33	3.860	1.89	1.0	GFF5X-66