

Fix position clamps

WTS CLAMP PULL-DOWN CLAMPS



WTS clamps

Application:

The most common use for pull-down clamps is clamping bolster plates or sub plates to the press bed or press ram. They can also clamp down the die, if the die is prepared with machined 'T' slots on the bottom of the die shoe. The tool must be placed in the press in correct position, parallel to the clamps. Six standard sizes are available to cover a wide range of required clamping forces.

General Features:

- Durable, simple design
- SAE-ORB porting for reusable, leakproof operation up to 6000 psi
- Suitable for retrofitting

To Order:

Note the type of clamp. Clamps that do not fit an existing 'T' slot can have the clamping foot adjusted. In this case please provide the 'T' slot information by filling out the form on page 48. The WTS clamps come in two different pressure supply styles:

- Hose connection style
- Flange connection style

HOSE CONNECTION PULL-DOWN CLAMPS WTSH

Features:

- Does not require gun drilling in the bolster for oil passage
- Mounting pocket must be drilled through the bolster for hose access.

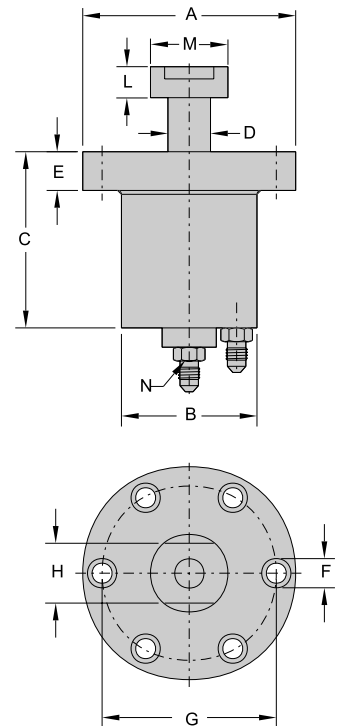
To Order:

The WTS clamp comes in two different types:

- Single action (spring return)
- Double action

The double action can be offered as fully retractable, that means the rod and the clamping foot could be retracted below the bolster surface. The height 'C' is going to vary for that clamp depending on standardized clamping height.

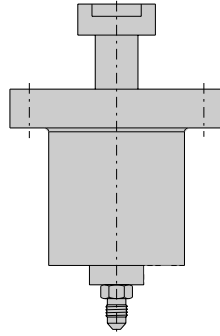
Please note the selected type of clamp and specify suitable features.



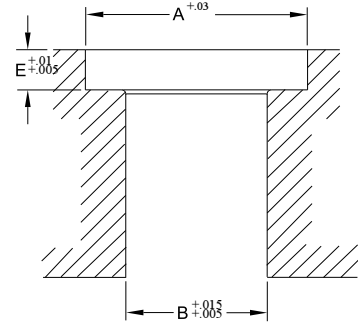
WTSH double acting clamp

* - discard 'C' for fully retractable clamp

TYPE	Clamping force @3500psi	Total stroke	Dimensions									Size of bolts 'F'
			'A'	'B'	'C' *	'D'	'E'	'G'	'H'	'L'	'M'	
UNIT	lbs	in	in	in	in	in	in	in	in	in	in	in
WTS20	4400	.312	3.500	2.362	2.953	.708	.787	2.913	1.00	.591	1.181	5/16-18
WTS40	8800	.394	4.331	2.750	3.150	.865	.787	3.543	1.25	.630	1.575	3/8-16
WTS70	15400	.394	6.000	3.969	3.740	1.022	.984	5.118	1.50	.984	1.772	1/2-13
WTS100	22000	.394	6.500	4.567	4.724	1.260	1.060	5.512	1.75	1.181	2.165	1/2-13
WTS150	30500	.500	7.125	5.118	4.921	1.417	1.378	6.141	2.00	1.500	2.543	1/2-13



WTSH single acting clamp
(use the previous page for dimension references)



WTSH mounting information

FLANGE CONNECTION PULL-DOWN CLAMPS WTSF

Features:

- Does not require drilling holes through the bolster for the clamp mounting
- Easy mounting, there are no hoses underneath the bolster required to supply oil pressure to the clamps.
- Pressure supplied by the oil passages made in the bolster plate.

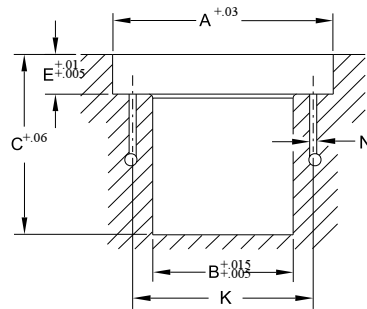
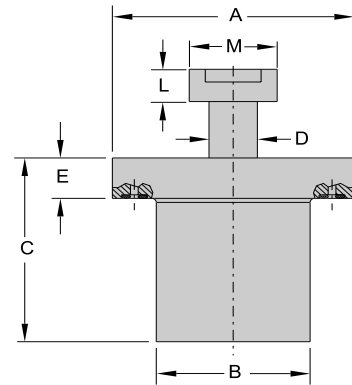
To Order:

The WTSF clamp comes in two different types:

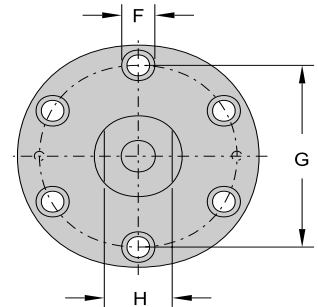
- Single action (spring return)
- Double action

The double action can be offered as fully retractable, that means the rod and the clamping foot could be retracted below the bolster surface. The height 'C' is going to vary for that clamp depending on standardized clamping height.

Please note the selected type of clamp and specify suitable features.



WTSF mounting information



WTSF clamp

* - discard 'C' for fully retractable clamp

TYPE	Clamping force @3500psi	Total stroke	Dimensions										Size of bolts 'F'
			'A'	'B'	'C' *	'D'	'E'	'G=K'	'H'	'L'	'M'	'N'	
UNIT	lbs	in	in	in	in	in	in	in	in	in	in	in	in
WTS20	4400	.312	3.500	2.362	2.953	.708	.787	2.913	1.00	.591	1.181	.156	5/16-18
WTS40	8800	.394	4.331	2.750	3.150	.865	.787	3.543	1.25	.630	1.575	.25	3/8-16
WTS70	15400	.394	6.000	3.969	3.740	1.022	.984	5.118	1.50	.984	1.772	.25	1/2-13
WTS100	22000	.394	6.500	4.567	4.724	1.260	1.060	5.512	1.75	1.181	2.165	.25	1/2-13
WTS150	30500	.500	7.125	5.118	4.921	1.417	1.378	6.141	2.00	1.500	2.543	.25	1/2-13