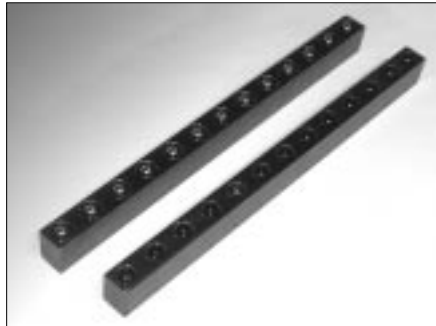


TM DIE LIFTERS



TM die lifter

Application:

The TM-lifters are used when multidirectional die positioning is required. The weight of dies is limited, because of point contact between ball and the die. The TM- lifters are an economical way of die handling.

Features:

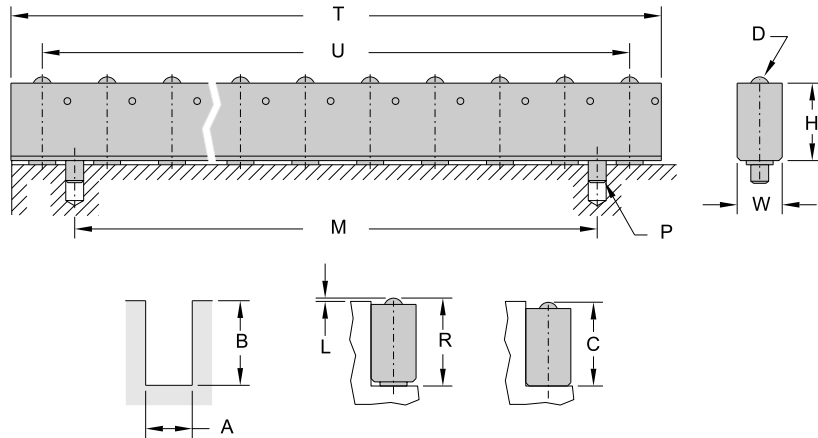
- Durable solid body
- Steel ball rollers

- Includes lifter mounting
- Lifting pistons face the bottom of a slot to keep them free from stamping dust and slugs

To Order:

Note the type of lifter.
If there is no size that fits existing slots, we can provide a custom design.
For special orders the size of the slot needs to be specified. Please fill out the form on page 48.

SIZE: TM18, TM20

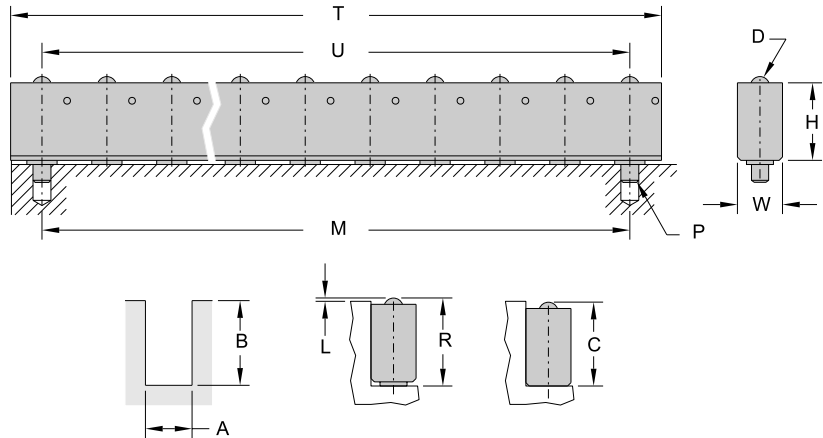


TYPE	U-Slot Size		Dimensions				Lift parameters		
	'A'	'B'	'W'	'H'	'D'	'P'	'C'	'R'	'L'
TM18	.709	1.181	.704	1.082	.394	.25x.5LG	1.168	1.251	.07
TM20	.813	1.181	.787	1.082	.394	.25x.5LG	1.168	1.251	.07

TYPE		Load cap	Dimensions			No. of pistons & balls
UNIT			lbs	in	in	
TM18/3	TM20/3	130	2.69	1.812	.875	3
TM18/4	TM20/4	175	3.59	2.718	1.781	4
TM18/5	TM20/5	220	4.50	3.624	2.688	5
TM18/6	TM20/6	264	5.41	4.53	3.594	6
TM18/7	TM20/7	305	6.31	5.436	4.500	7
TM18/8	TM20/8	350	7.22	6.342	5.406	8
TM18/9	TM20/9	395	8.13	7.248	6.313	9
TM18/10	TM20/10	440	9.03	8.154	7.219	10
TM18/11	TM20/11	480	9.94	9.06	8.125	11
TM18/12	TM20/12	525	10.84	9.966	9.031	12
TM18/13	TM20/13	570	11.75	10.872	9.938	13
TM18/14	TM20/14	615	12.66	11.778	10.844	14
TM18/15	TM20/15	660	13.56	12.684	11.750	15
TM18/16	TM20/16	700	14.47	13.59	12.656	16
TM18/17	TM20/17	745	15.38	14.496	13.563	17
TM18/18	TM20/18	790	16.28	15.402	14.469	18
TM18/19	TM20/19	835	17.19	16.308	15.375	19

TM DIE LIFTERS

SIZE: **TM22, TM25, TM28, TM36**



TYPE	U-Slot Size		Dimensions				Lift parameters		
	'A'	'B'	'W'	'H'	'D'	'P'	'C'	'R'	'L'
TM22	.866	1.496	.846	1.363	.472	.25x.5LG	1.481	1.576	.080
TM25	1.000	1.496	.980	1.363	.472	.25x.5LG	1.481	1.576	.080

TYPE	U-Slot Size		Dimensions				Lift parameters		
	'A'	'B'	'W'	'H'	'D'	'P'	'C'	'R'	'L'
TM28	1.103	1.890	1.083	1.717	.590	.25x.5LG	1.875	1.980	.090
TM36	1.418	2.390	1.397	2.140	.590	.25x.5LG	2.375	2.485	.090

TYPE	Load cap	Dimensions		No. of pistons & balls	
		'T'	'U=M'		
UNIT	lbs	in	in		
TM22/3	TM25/3	260	3.5	2.5	3
TM22/4	TM25/4	345	4.75	3.75	4
TM22/5	TM25/5	435	6.00	5.00	5
TM22/6	TM25/6	520	7.25	6.25	6
TM22/7	TM25/7	600	8.50	7.50	7
TM22/8	TM25/8	695	9.75	8.75	8
TM22/9	TM25/9	780	11.00	10.00	9
TM22/10	TM25/10	870	12.25	11.25	10
TM22/11	TM25/11	950	13.50	12.50	11
TM22/12	TM25/12	1040	14.75	13.75	12
TM22/13	TM25/13	1130	16.00	15.00	13
TM22/14	TM25/14	1210	17.25	16.25	14
TM22/15	TM25/15	1300	18.50	17.50	15
TM22/16	TM25/16	1390	19.75	18.75	16
TM22/17	TM25/17	1470	21.00	20.00	17
TM22/18	TM25/18	1560	22.25	21.25	18
TM22/19	TM25/19	1650	23.50	22.5	19

TYPE	Load cap	Dimensions		No. of pistons & balls
		'T'	'U=M'	
UNIT	lbs	in	in	
TM28/3	400	4.5	3.25	3
TM28/4	525	6.125	4.875	4
TM28/5	660	7.75	6.5	5
TM28/6	790	9.375	8.125	6
TM28/7	925	11.00	9.75	7
TM28/8	1060	12.625	11.375	8
TM28/9	1190	14.25	13.00	9
TM28/10	1330	15.875	14.625	10
TM28/11	1460	17.5	16.25	11
TM28/12	1590	19.125	17.875	12
TM28/13	1720	20.75	19.5	13
TM28/14	1860	22.375	21.125	14
TM28/15	1990	24.00	22.75	15
TM28/16	2120	25.625	24.375	16
TM28/17	2260	27.25	26.00	17
TM28/18	2390	28.875	27.625	18
TM28/19	2520	30.5	29.25	19

TYPE	Load cap	Dimensions		No. of pistons & balls
		'T'	'U=M'	
UNIT	lbs	in	in	
TM36/3	600	4.875	3.187	3
TM36/4	800	6.469	4.781	4
TM36/5	1000	8.063	6.375	5
TM36/6	1200	9.656	7.968	6
TM36/7	1400	11.25	9.562	7
TM36/8	1600	12.844	11.156	8
TM36/9	1800	14.438	12.75	9
TM36/10	2000	16.031	14.343	10
TM36/11	2200	17.625	15.937	11
TM36/12	2400	19.219	17.531	12
TM36/13	2600	20.813	19.125	13
TM36/14	2800	22.406	20.718	14
TM36/15	3000	24.00	22.312	15
TM36/16	3200	25.594	23.906	16
TM36/17	3400	27.188	25.50	17
TM36/18	3600	28.781	27.093	18
TM36/19	3800	30.375	28.687	19