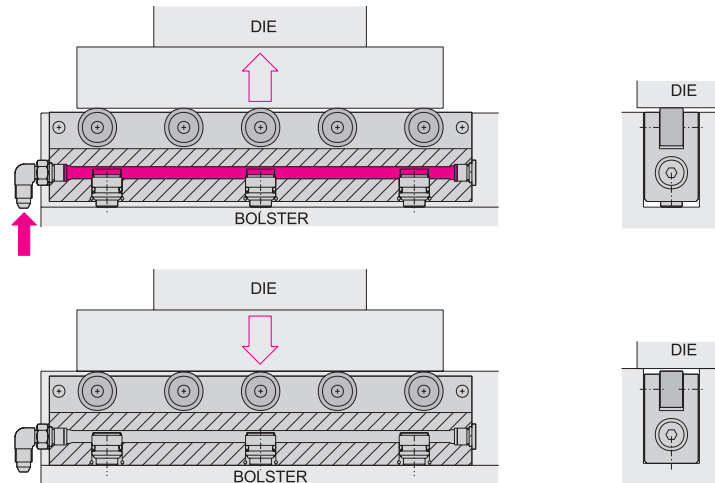


HYDRAULIC DIE LIFTER-HOW IT WORKS

The hydraulic die lifters are designed for positioning heavy dies, fixtures, tools, or pallets. They are mounted in T-slots or U-slots. Hydraulic pressure raises the lifter with the die off the bolster. At this point, the die can be moved to the required position. The pressure is then released and the

lifters will sink into the bolster. The die is then fastened to the bolster. If hydraulic clamping is used, the hydraulic die lifter circuit is safety interlocked with the bolster clamping circuit to prevent damage to the equipment.



TH DIE LIFTERS

Application:

The TH-lifters are used when multidirectional die positioning is required. The weight of dies is limited by character point contact between ball and die. The TM- lifters are an economical way of die handling.

To Order:

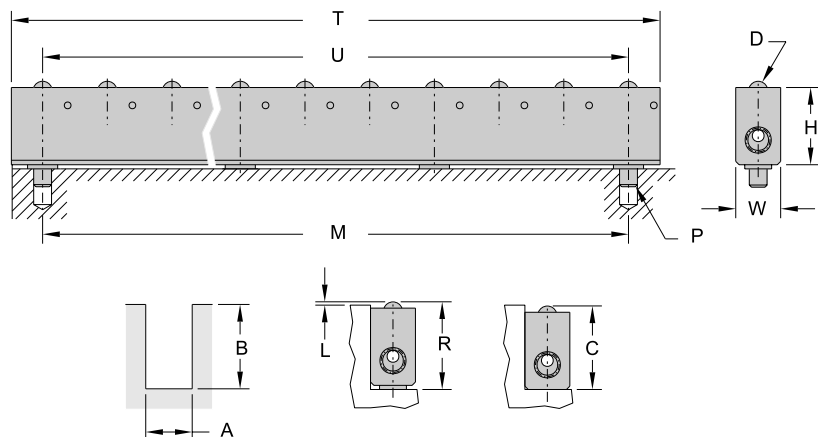
Note the type of lifter. If there is no size that fits existing slots, we can provide a custom design. For special orders the size of the slot needs to be specified. Please fill out the form on page 48.

Features:

- Durable solid body
- Steel ball rollers
- Includes lifter mounting
- Safe 3500psi hydraulic pressure is used
- Lifting pistons faces bottom of a slot - to keep them free from stamping dust and trash

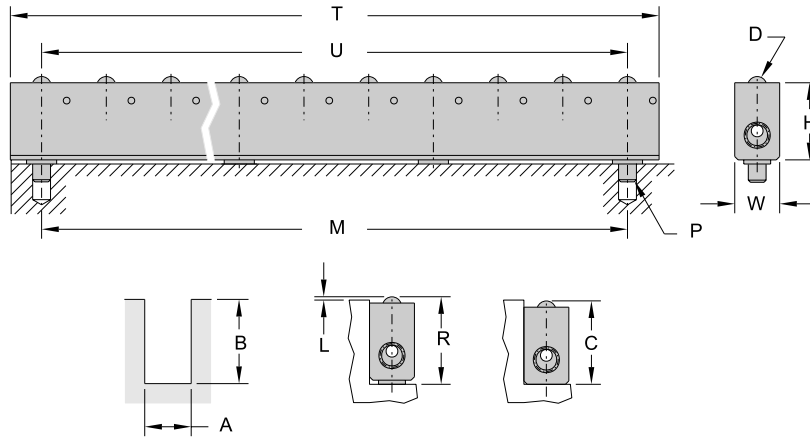


TH die lifters



TH DIE LIFTERS

SIZE: TH18, TH20, TH22, TH25,



TYPE	U-Slot Size		Dimensions				Lift parameters		
	'A'	'B'	'W'	'H'	'D'	'P'	'C'	'R'	'L'
TH18	.709	1.181	.704	1.076	.394	.188x.5LG	1.163	1.211	.030
TH20	.813	1.181	.787	1.076	.394	.188x.5LG	1.163	1.211	.030

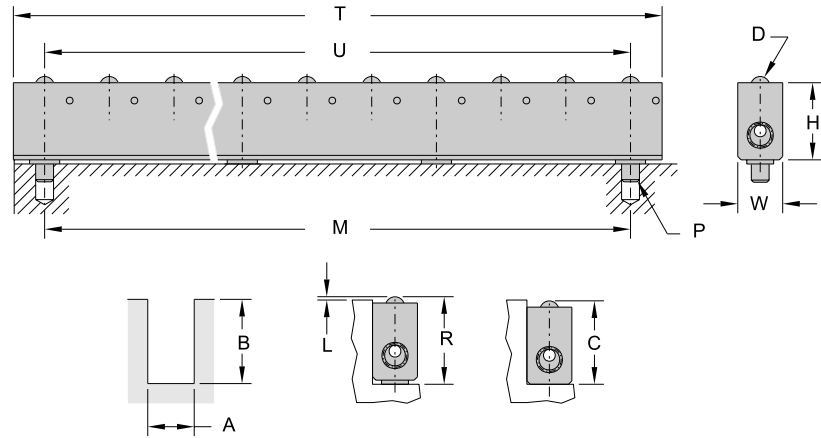
TYPE	U-Slot Size		Dimensions				Lift parameters		
	'A'	'B'	'W'	'H'	'D'	'P'	'C'	'R'	'L'
TH22	.866	1.496	.846	1.363	.472	.25x.5LG	1.481	1.561	.065
TH25	1.000	1.496	.980	1.363	.472	.25x.5LG	1.481	1.561	.065

TYPE		Load cap lbs	Dimensions		No. of balls in	No. of pistons in
UNIT			'T'	'U=M'		
TH18/3	TH20/3	480	4.63	2.375	3	2
TH18/4	TH20/4	640	5.81	3.563	4	2
TH18/5	TH20/5	800	7.00	4.750	5	3
TH18/6	TH20/6	960	8.19	5.938	6	3
TH18/7	TH20/7	1120	9.38	7.125	7	3
TH18/8	TH20/8	1280	10.56	8.313	8	3
TH18/9	TH20/9	1440	11.75	9.500	9	4
TH18/10	TH20/10	1600	12.94	10.688	10	4
TH18/11	TH20/11	1760	14.13	11.875	11	4
TH18/12	TH20/12	1920	15.31	13.063	12	4
TH18/13	TH20/13	2080	16.50	14.250	13	5
TH18/14	TH20/14	2240	17.69	15.438	14	5
TH18/15	TH20/15	2400	18.88	16.625	15	5
TH18/16	TH20/16	2560	20.06	17.813	16	6
TH18/17	TH20/17	2720	21.25	19.000	17	6
TH18/18	TH20/18	2880	22.44	20.188	18	6
TH18/19	TH20/19	3040	23.63	21.375	19	7
TH18/20	TH20/20	3200	24.81	22.563	20	7
TH18/21	TH20/21	3360	26.00	23.750	21	7
TH18/22	TH20/22	3520	27.19	24.938	22	8
TH18/23	TH20/23	3680	28.38	26.125	23	8
TH18/24	TH20/24	3840	29.56	27.313	24	8
TH18/25	TH20/25	4000	30.75	28.500	25	9
TH18/26	TH20/26	4160	31.94	29.688	26	9

TYPE		Load cap lbs	Dimensions		No. of balls in	No. of pistons in
UNIT			'T'	'U=M'		
TH22/3	TH25/3	810	5.63	3.125	3	2
TH22/4	TH25/4	1080	5.19	4.688	4	2
TH22/5	TH25/5	1350	8.75	6.25	5	3
TH22/6	TH25/6	1620	9.38	7.813	6	3
TH22/7	TH25/7	1890	11.88	9.375	7	3
TH22/8	TH25/8	2160	13.44	10.938	8	4
TH22/9	TH25/9	2430	15.00	12.5	9	4
TH22/10	TH25/10	2700	16.56	14.063	10	4
TH22/11	TH25/11	2970	18.13	15.625	11	5
TH22/12	TH25/12	3240	19.69	17.188	12	5
TH22/13	TH25/13	3510	21.25	18.75	13	5
TH22/14	TH25/14	3780	22.81	20.313	14	6
TH22/15	TH25/15	4050	24.38	21.875	15	6
TH22/16	TH25/16	4320	25.94	23.438	16	6
TH22/17	TH25/17	4590	27.5	25.00	17	7
TH22/18	TH25/18	4860	29.06	26.563	18	7
TH22/19	TH25/19	5130	30.63	28.125	19	7
TH22/20	TH25/20	5400	32.19	29.688	20	8
TH22/21	TH25/21	5670	33.75	31.25	21	8
TH22/22	TH25/22	5940	35.31	32.813	22	8
TH22/23	TH25/23	6210	35.88	34.375	23	9
TH22/24	TH25/24	6480	38.44	35.938	24	9
TH22/25	TH25/25	6750	40.00	37.500	25	9
TH22/26	TH25/26	7020	41.56	39.063	26	10

TH DIE LIFTERS

SIZE: TH28, TH36



TYPE	U-Slot Size		Dimensions				Lift parameters		
	'A'	'B'	'W'	'H'	'D'	'P'	'C'	'R'	'L'
TH28	1.103	1.890	1.083	1.717	.590	25x5LG	1.873	1.953	.063
TH36	1.418	2.390	1.397	2.140	.590	25x5LG	2.375	2.453	.063

TYPE	Load cap	Dimensions		No. of balls	No. of pistons
		'T'	'U=M'		
UNIT	lbs	in	in	in	in
TH28/3	990	6	3.55	3	2
TH28/4	1320	7.75	5.25	4	2
TH28/5	1650	9.5	7.00	5	3
TH28/6	1980	11.25	8.75	6	3
TH28/7	2310	13.00	10.5	7	3
TH28/8	2640	14.75	12.25	8	4
TH28/9	2970	16.5	14.00	9	4
TH28/10	3300	18.25	15.75	10	4
TH28/11	3630	20.00	17.5	11	5
TH28/12	3960	21.75	19.25	12	5
TH28/13	4290	23.50	21.00	13	5
TH28/14	4620	25.25	22.75	14	6
TH28/15	4950	27.00	24.5	15	6
TH28/16	5280	28.75	26.25	16	6
TH28/17	5610	30.50	28.00	17	7
TH28/18	5940	32.25	29.75	18	7
TH28/19	6270	34.00	31.50	19	8
TH28/20	6600	35.75	33.25	20	8
TH28/21	6930	37.50	35.00	21	9
TH28/22	7260	39.25	36.75	22	9
TH28/23	7590	41.00	38.50	23	9
TH28/24	7920	42.75	40.25	24	10
TH28/25	8250	44.50	42.00	25	10
TH28/26	8580	46.25	43.75	26	10

TYPE	Load cap	Dimensions		No. of balls	No. of pistons
		'T'	'U=M'		
UNIT	lbs	in	in		
TH36/3	1650	6.50	3.875	3	2
TH36/4	2200	8.44	5.813	4	3
TH36/5	2750	10.38	7.750	5	3
TH36/6	3300	12.31	9.688	6	3
TH36/7	3850	14.25	11.625	7	4
TH36/8	4400	16.19	13.565	8	4
TH36/9	4950	18.13	15.500	9	4
TH36/10	5500	20.06	17.438	10	5
TH36/11	6050	22.00	19.375	11	5
TH36/12	6600	23.94	21.313	12	5
TH36/13	7150	25.88	23.250	13	6
TH36/14	7700	27.81	25.188	14	6
TH36/15	8250	29.75	27.125	15	6
TH36/16	8800	31.69	29.063	16	7
TH36/17	9350	33.63	31.000	17	7
TH36/18	9900	35.56	32.938	18	7
TH36/19	10450	37.50	34.875	19	8
TH36/20	11000	39.44	36.813	20	8
TH36/21	11550	41.38	38.750	21	8
TH36/22	12100	43.31	40.688	22	9
TH36/23	12650	45.25	42.625	23	9
TH36/24	13200	47.19	44.563	24	9
TH36/25	13750	49.13	46.500	25	10
TH36/26	14300	51.06	48.438	26	10