

# RTM DIE LIFTERS

**Application:**

Spring loaded cam roller die lifters, type RTM, are used to achieve easy manual or powered die positioning. They are built to carry heavier dies.

Cam rollers, that are mounted on top of the lifters, provide linear contact with a die.

**Features:**

- Durable solid body
- Steel cam rollers

- Includes lifter mounting
- Lifting pistons faces bottom of a slot - to keep them free from stamping dust and slugs

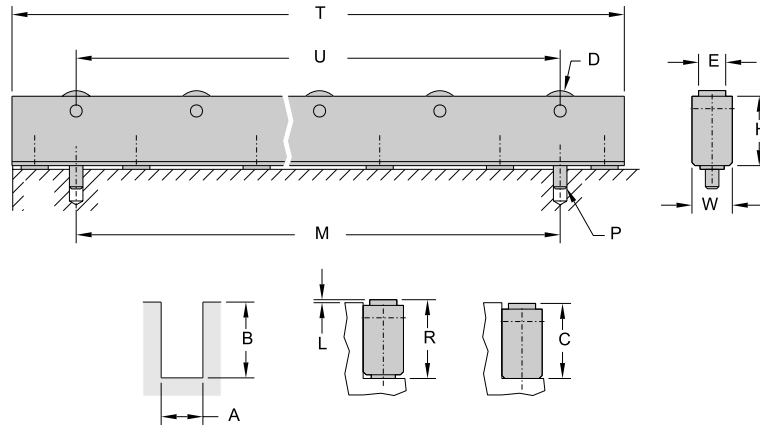
**To Order:**

Note the type of lifter.

If there is no size that fits existing slots, we can provide a custom design.

For special orders the size of the slot needs to be specified. Please fill the form on page 48.

**SIZE: RTM18, RTM20**

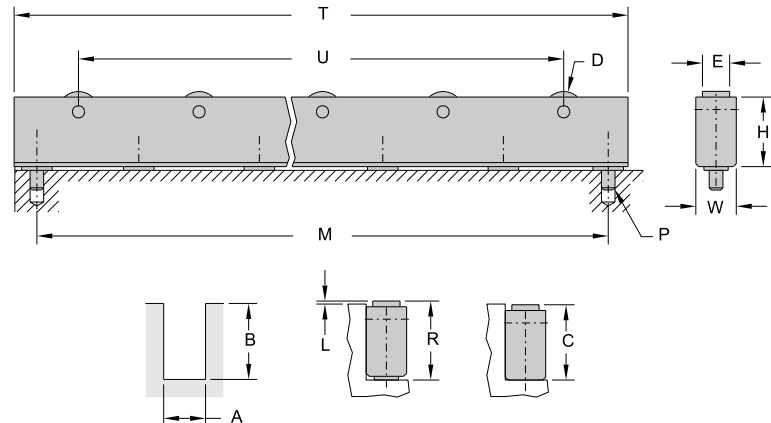


TYPE	U-Slot Size		Dimensions					Lift parameters		
	'A'	'B'	'W'	'H'	'D'	'E'	'P'	'C'	'R'	'L'
RTM18	.709	1.181	.704	1.082	.630	.472	.25x.5LG	1.168	1.251	.070
RTM20	.813	1.181	.787	1.082	.630	.472	.25x.5LG	1.168	1.251	.070

TYPE	Load cap	Dimensions		No. of rollers	No. of pistons	
		'T'	'U=M'			
UNIT	lbs	in	in			
RIM18/3	RIM20/3	130	6.38	3.750	3	4
RIM18/4	RIM20/4	175	8.25	5.625	4	5
RIM18/5	RIM20/5	220	10.13	7.500	5	6
RIM18/6	RIM20/6	264	12.00	9.375	6	7
RIM18/7	RIM20/7	305	13.88	11.250	7	8
RIM18/8	RIM20/8	350	15.75	13.125	8	9
RIM18/9	RIM20/9	395	17.63	15.000	9	10
RIM18/10	RIM20/10	440	19.50	16.875	10	11
RIM18/11	RIM20/11	480	21.38	18.750	11	12
RIM18/12	RIM20/12	525	23.25	20.625	12	13
RIM18/13	RIM20/13	570	25.13	22.500	13	14
RIM18/14	RIM20/14	615	27.00	24.375	14	15
RIM18/15	RIM20/15	660	28.88	26.250	15	16
RIM18/16	RIM20/16	700	30.75	28.125	16	17
RIM18/17	RIM20/17	745	32.63	30.00	17	18
RIM18/18	RIM20/18	790	34.50	31.875	18	19
RIM18/19	RIM20/19	835	36.38	33.750	19	20

# RTM DIE LIFTERS

SIZE: RTM22, RTM25

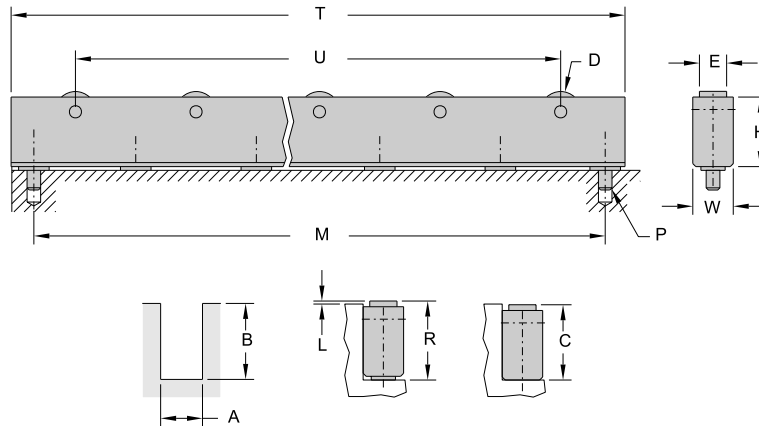


TYPE	U-Slot Size		Dimensions					Lift parameters		
	'A'	'B'	'W'	'H'	'D'	'E'	'P'	'C'	'R'	'L'
RTM22	.866	1.496	.846	1.393	.875	.50	25x.5LG	1.481	1.576	.080
RTM25	1.000	1.496	.980	1.393	.875	.50	25x.5LG	1.481	1.576	.080

TYPE	UNIT	Load cap lbs	Dimensions			No. of rollers	No. of pistons
			'T' in	'U' in	'M' in		
RTM22/3	RTM25/3	345	7.94	4.626	6.938	3	4
RTM22/4	RTM25/4	435	10.25	6.938	9.25	4	5
RTM22/5	RTM25/5	520	12.56	9.25	11.563	5	6
RTM22/6	RTM25/6	600	14.88	11.563	13.875	6	7
RTM22/7	RTM25/7	695	17.19	13.875	16.188	7	8
RTM22/8	RTM25/8	780	19.50	16.188	18.500	8	9
RTM22/9	RTM25/9	870	21.18	18.500	20.813	9	10
RTM22/10	RTM25/10	950	24.13	20.813	23.125	10	11
RTM22/11	RTM25/11	1040	26.44	23.125	25.438	11	12
RTM22/12	RTM25/12	1130	28.75	25.438	27.75	12	13
RTM22/13	RTM25/13	1210	31.06	27.75	30.063	13	14
RTM22/14	RTM25/14	1300	33.38	30.063	32.375	14	15
RTM22/15	RTM25/15	1390	35.69	32.375	34.688	15	16
RTM22/16	RTM25/16	1470	38.00	34.688	37.00	16	17
RTM22/17	RTM25/17	1560	40.31	37.00	39.313	17	18
RTM22/18	RTM25/18	1650	42.63	39.313	41.688	18	19
RTM22/19	RTM25/19	1740	44.94	41.688	43.938	19	20

# RTM DIE LIFTERS

SIZE: RTM28, RTM36



TYPE	U-Slot Size		Dimensions					Lift parameters		
	'A'	'B'	'W'	'H'	'D'	'E'	'P'	'C'	'R'	'L'
RTM28	1.103	1.890	1.083	1.750	1.00	.625	25x5LG	1.875	1.983	.080
RTM36	1.418	1.890	1.397	1.750	1.00	.625	25x5LG	1.875	2.074	.080

TYPE	Load cap	Dimensions			No. of rollers	No. of pistons
		'T'	'U'	'M'		
UNIT	lbs	in	in	in		
RTM28/3	525	9.88	8.625	11.500	3	4
RTM28/4	660	12.75	11.500	14.375	4	5
RTM28/5	790	15.63	14.375	17.25	5	6
RTM28/6	925	18.50	17.25	20.125	6	7
RTM28/7	1060	21.38	20.125	23.00	7	8
RTM28/8	1190	24.25	23.00	25.875	8	9
RTM28/9	1330	27.13	25.875	28.75	9	10
RTM28/10	1460	30.00	28.75	31.625	10	11
RTM28/11	1590	32.88	31.625	34.50	11	12
RTM28/12	1720	35.75	34.50	37.375	12	13
RTM28/13	1860	38.63	37.375	40.250	13	14
RTM28/14	1990	41.50	40.250	43.125	14	15
RTM28/15	2120	44.38	43.125	46.00	15	16
RTM28/16	2260	47.25	46.00	48.875	16	17
RTM28/17	2390	50.13	48.875	51.750	17	18
RTM28/18	2520	53.00	51.750	54.625	18	19
RTM28/19	2660	55.88	54.625	57.500	19	20

TYPE	Load cap	Dimensions			No. of rollers	No. of pistons
		'T'	'U'	'M'		
UNIT	lbs	in	in	in		
RTM36/3	800	10.00	8.625	11.50	3	4
RTM36/4	1000	12.88	11.50	14.375	4	5
RTM36/5	1200	15.75	14.375	17.25	5	6
RTM36/6	1400	18.63	17.25	20.125	6	7
RTM36/7	1600	21.50	20.125	23.00	7	8
RTM36/8	1800	24.38	23.00	25.875	8	9
RTM36/9	2000	27.25	25.875	28.750	9	10
RTM36/10	2200	30.13	28.750	31.625	10	11
RTM36/11	2400	33.00	31.625	34.500	11	12
RTM36/12	2600	35.88	34.500	37.375	12	13
RTM36/13	2800	38.75	37.375	40.250	13	14
RTM36/14	3000	41.63	40.250	43.125	14	15
RTM36/15	3200	44.50	43.125	46.000	15	16
RTM36/16	3400	47.38	46.000	48.875	16	17
RTM36/17	3600	50.25	48.875	51.750	17	18
RTM36/18	3800	53.31	51.750	54.625	18	19
RTM36/19	4000	56.00	54.625	57.500	19	20