

RTH DIE LIFTERS

Application:

Hydraulic cam roller die lifters, type RTH, are used with heavy dies to achieve easy manual or powered die positioning. The rollers also help prevent damage to the dies from sliding the die on the bolster.

Features:

- Durable solid body
- Steel cam rollers
- Includes lifter mounting

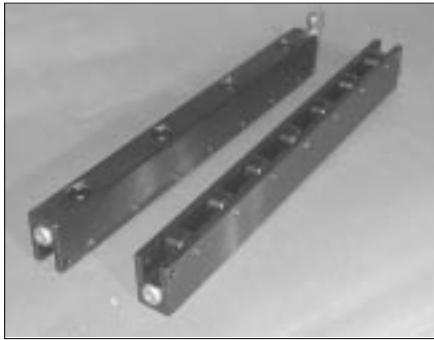
- maximum economy/capacity ratio
- Safe 3500psi hydraulic pressure is used
- Lifting pistons faces bottom of a slot - to keep them free from stamping dust and slug

To Order:

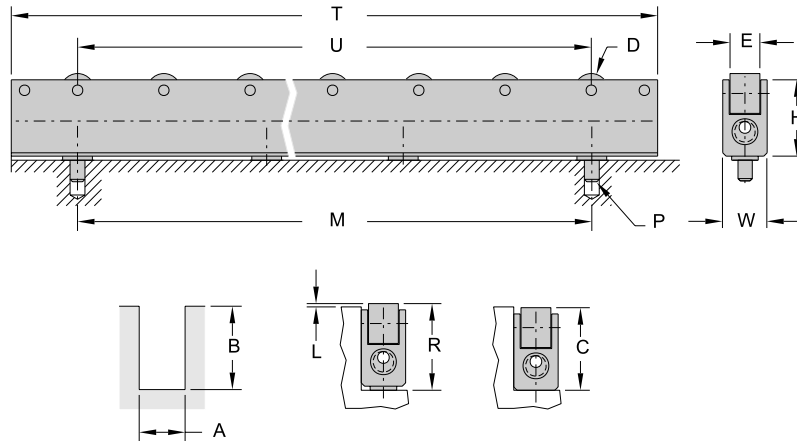
Note the type of lifter.

If there is no size that fits existing slots, we can provide a custom design.

For special orders the size of the slot needs to be specified. Please fill out the form on page 48.



RTH die lifters



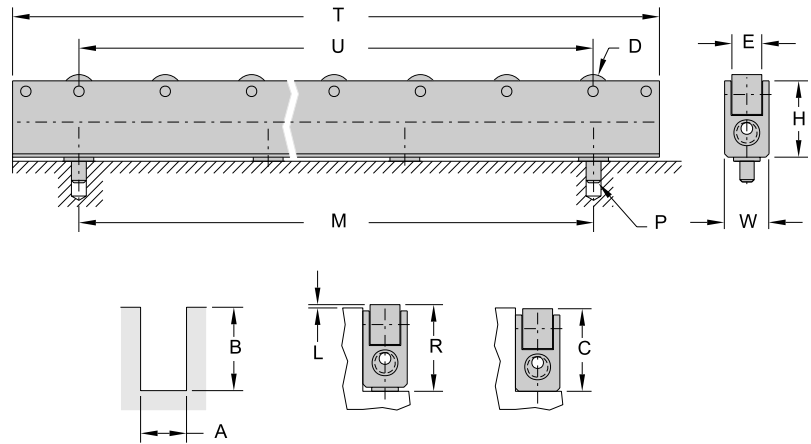
TYPE	Dimensions				
	'W'	'H'	'D'	'E'	'P'
RTH22	.846	1.437	.75	.500	.25x 5LG
RTH25	.984	1.437	.75	.500	.25x 5LG

TYPE	U-Slot Size		Lift parameters		
	'A'	'B'	'C'	'R'	'L'
RTH22	.866	1.570	1.555	1.622	.052
RTH25	1.000	1.570	1.555	1.622	.052

TYPE		Load cap	Dimensions		No. of rollers	No. of pistons
UNIT			lbs	'T' in		
RTH22/3	RTH25/3	1300	6.00	4.000	3	2
RTH22/4	RTH25/4	1300	7.63	5.625	4	2
RTH22/5	RTH25/5	1900	9.38	7.375	5	3
RTH22/6	RTH25/6	1900	10.75	8.750	6	3
RTH22/7	RTH25/7	2600	12.50	10.500	7	4
RTH22/8	RTH25/8	2600	13.81	11.812	8	4
RTH22/9	RTH25/9	3200	15.50	13.500	9	5
RTH22/10	RTH25/10	3200	17.19	15.188	10	5
RTH22/11	RTH25/11	3900	18.88	16.875	11	6
RTH22/12	RTH25/12	3900	20.56	18.562	12	6
RTH22/13	RTH25/13	4600	21.88	19.875	13	7
RTH22/14	RTH25/14	4600	23.50	21.500	14	7
RTH22/15	RTH25/15	5200	25.19	23.188	15	8
RTH22/16	RTH25/16	5200	26.38	24.375	16	8
RTH22/17	RTH25/17	5900	28.00	26.000	17	9
RTH22/18	RTH25/18	5900	29.63	27.625	18	9
RTH22/19	RTH25/19	6550	31.25	29.250	19	10
RTH22/20	RTH25/20	6550	32.88	30.875	20	10
RTH22/21	RTH25/21	7200	34.50	32.500	21	11
RTH22/22	RTH25/22	7200	36.13	34.125	22	11
RTH22/23	RTH25/23	7850	37.75	35.750	23	12
RTH22/24	RTH25/24	7850	39.38	37.375	24	12
RTH22/25	RTH25/25	8500	41.00	39.000	25	13
RTH22/26	RTH25/26	8500	42.63	40.625	26	13

RTH DIE LIFTERS

SIZE: RTH28, RTH36



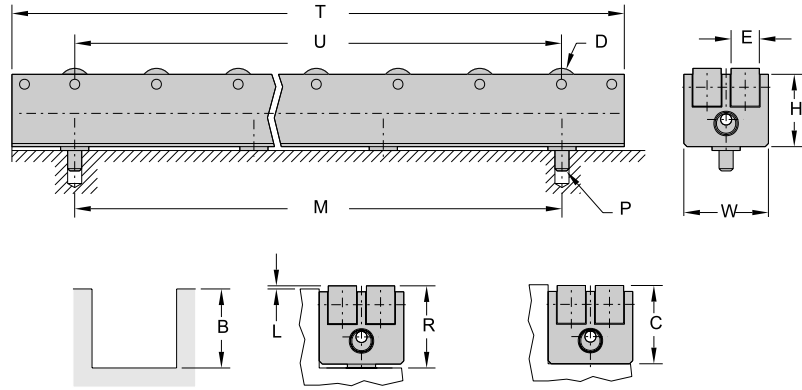
TYPE	U-Slot Size		Dimensions					Lift parameters		
	'A'	'B'	'W'	'H'	'D'	'E'	'P'	'C'	'R'	'L'
RTH28	1.103	1.890	1.083	1.750	.875	.500	.25x.5LG	1.875	1.953	.063
RTH36	1.418	2.390	1.397	2.281	1.00	.625	.25x.5LG	2.375	2.453	.063

TYPE	Load cap.	Dimensions		No. of rollers	No. of pistons
		'T'	'U=M'		
UNIT	lbs	in	in	in	in
RTH28/3	2000	7.00	4.50	3	2
RTH28/4	2000	9.06	6.562	4	2
RTH28/5	3000	11.00	8.50	5	3
RTH28/6	3000	12.97	10.469	6	3
RTH28/7	4100	15.06	12.562	7	4
RTH28/8	4100	16.94	14.438	8	4
RTH28/9	5100	19.00	16.50	9	5
RTH28/10	5100	20.78	18.281	10	5
RTH28/11	6100	22.81	20.312	11	6
RTH28/12	6100	24.84	22.344	12	6
RTH28/13	7150	26.88	24.375	13	7
RTH28/14	7150	28.50	26.00	14	7
RTH28/15	8200	30.50	28.00	15	8
RTH28/16	8200	32.50	30.00	16	8
RTH28/17	9200	34.50	32.00	17	9
RTH28/18	9200	36.50	34.00	18	9
RTH28/19	10200	38.50	36.00	19	10
RTH28/20	10200	40.50	38.00	20	10
RTH28/21	11250	42.50	40.00	21	11
RTH28/22	10200	44.50	42.00	22	11
RTH28/23	11250	46.50	44.00	23	12
RTH28/24	10200	48.50	46.00	24	12
RTH28/25	11250	50.50	48.00	25	13
RTH28/26	11250	52.50	50.00	26	13

TYPE	Load cap.	Dimensions		No. of rollers	No. of pistons
		'T'	'U=M'		
UNIT	lbs	in	in		
RTH36/3	2000	11.00	8.00	3	2
RTH36/4	3000	14.50	11.50	4	2
RTH36/5	3000	18.00	15.00	5	3
RTH36/6	4500	21.56	18.563	6	3
RTH36/7	4500	25.19	22.188	7	4
RTH36/8	6000	28.75	25.750	8	4
RTH36/9	6000	32.25	29.250	9	5
RTH36/10	6000	35.69	32.688	10	5
RTH36/11	8000	40.00	37.00	11	6
RTH36/12	8000	42.72	39.719	12	6
RTH36/13	9200	46.38	43.375	13	7
RTH36/14	9200	50.03	47.031	14	7
RTH36/15	10000	53.69	50.688	15	8
RTH36/16	10000	56.88	53.875	16	8
RTH36/17	12000	60.50	57.50	17	9

RTH DIE LIFTERS

SIZE: **RTH50**

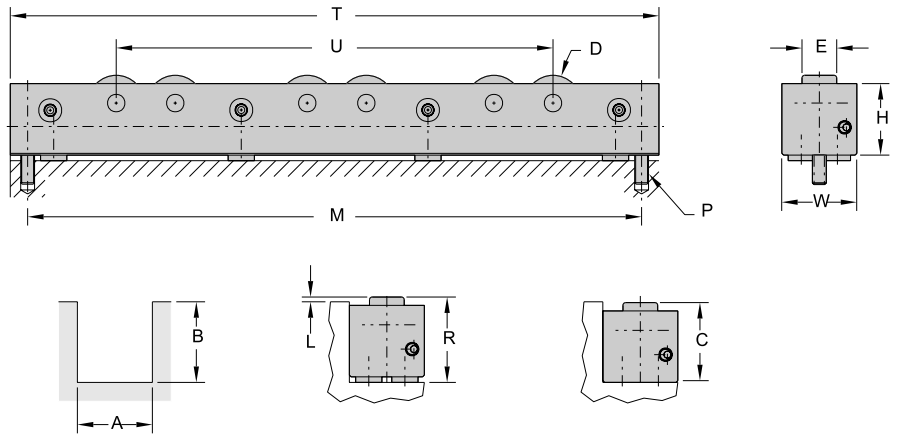


TYPE	U-Slot Size		Dimensions					Lift parameters		
	'A'	'B'	'W'	'H'	'D'	'E'	'P'	'C'	'R'	'L'
RTH50	1.969	2.39	1.93	2.25	1.875	1.0	3/8-16	2.375	2.453	.063

TYPE	Load cap.	Dimensions		No. of rollers	No. of pistons
		'T'	'U=M'		
UNIT	lbs	in	in		
RTH50/3	2720	7.00	4.50	3	2
RTH50/4	2720	9.25	6.75	4	2
RTH50/5	4080	11.50	9.00	5	3
RTH50/6	4080	13.75	11.25	6	3
RTH50/7	5440	16.00	13.50	7	4
RTH50/8	5440	18.25	15.75	8	4
RTH50/9	6800	20.50	18.00	9	5
RTH50/10	6800	22.75	20.25	10	5
RTH50/11	8160	25.00	22.50	11	6
RTH50/12	8160	27.25	24.75	12	6
RTH50/13	9520	29.50	27.00	13	7
RTH50/14	9520	31.75	29.25	14	7
RTH50/15	10880	34.00	31.50	15	8
RTH50/16	10880	36.25	33.75	16	8
RTH50/17	12240	38.50	36.00	17	9
RTH50/18	12240	40.75	38.25	18	9
RTH50/19	13600	43.00	40.50	19	10
RTH50/20	13600	45.25	42.75	20	10
RTH50/21	14960	47.50	45.00	21	11
RTH50/22	14960	49.75	47.25	22	11
RTH50/23	16320	52.00	49.50	23	12
RTH50/24	16320	54.25	51.75	24	12
RTH50/25	17680	56.50	54.00	25	13
RTH50/26	17680	58.75	56.25	26	13

RTH DIE LIFTERS

SIZE: RTH70



TYPE	U-Slot Size		Dimensions					Lift parameters		
	'A'	'B'	'W'	'H'	'D'	'E'	'P'	'C'	'R'	'L'
RIH70	2.75	2.764	2.70	2.575	2.0	1.25	1/2-13	2.751	2.874	.100

TYPE	Load cap.	Dimensions			No. of rollers	No. of pistons
		'T'	'U'	'M'		
UNIT	lbs	in	in	in		
RIH70/2	3600	9.75	6.875	8.750	2	4
RIH70/4	7200	16.625	13.75	15.625	4	6
RIH70/6	9600	23.5	20.625	22.500	6	8
RIH70/8	12000	30.375	27.50	29.375	8	10
RIH70/10	14400	37.25	34.375	36.250	10	12
RIH70/12	16800	44.125	41.25	43.125	12	14
RIH70/14	19200	57.875	55.00	56.875	14	16
RIH70/16	21600	64.75	61.875	63.750	16	18
RIH70/18	24000	71.625	68.75	70.625	18	20
RIH70/20	26400	78.5	75.625	77.500	20	22
RIH70/22	28800	85.375	82.50	84.375	22	24