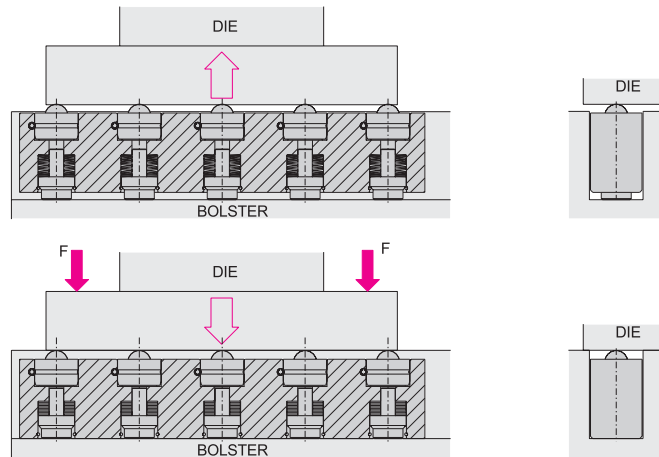


# Die lifters

## MECHANICAL DIE LIFTER-HOW IT WORKS

**TM & RTM Lifters:**  
Spring elevating die lifters allow the easy movement of dies, fixtures, tools, and pallets. They are mounted in T-slots or U-slots. The lifter is held in the down position by clamping the die. When the clamp is released, the dies are lifted up, and can

be moved to a different position. The springs raise the balls and lift the die off the bolster. By clamping the die down, the springs are compressed and the lifters are pressed into the bolster. Although TM lifters are built to fit standard T-slots, nonstandard sizes can be designed as well.



## EM BALL INSERTS

**Application:**  
The EM ball insert enables easy maneuvering of dies. They can be placed almost anywhere due to their compact design. The inserts can be used as stand alone devices, or in conjunction with other lifting devices. EM inserts require only a reamed hole to be installed.

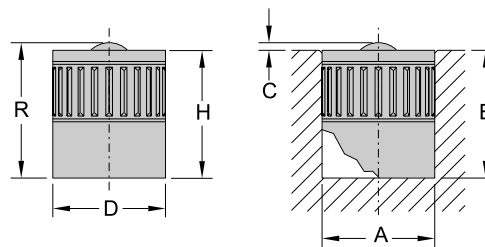
- Steel ball rollers
- Easy installation
- Lifting pistons face the bottom of a slot to keep them free from stamping dust and trash

**To Order:**  
Note the type of insert.  
For special orders, the size of the hole needs to be specified.

- Features:**
- Compact envelope



EM inserts



TYPE	Load cap.	Bore Size		Dim		Lift	
		'A'	'B'	'D'	'H'	'L'	'R'
UNIT	lb	in	in	in	in	in	in
EM18	45	.788	.945	.787	.943	.059	1.004
EM22	90	.945	1.122	.943	1.120	.059	1.181
EM28	130	1.181	1.339	1.179	1.337	.079	1.418
EM36	220	1.575	1.772	1.572	1.770	.118	1.890