

BTH DIE LIFTERS

BIDIRECTION STYLE

NEW



BTH die lifter

Application:

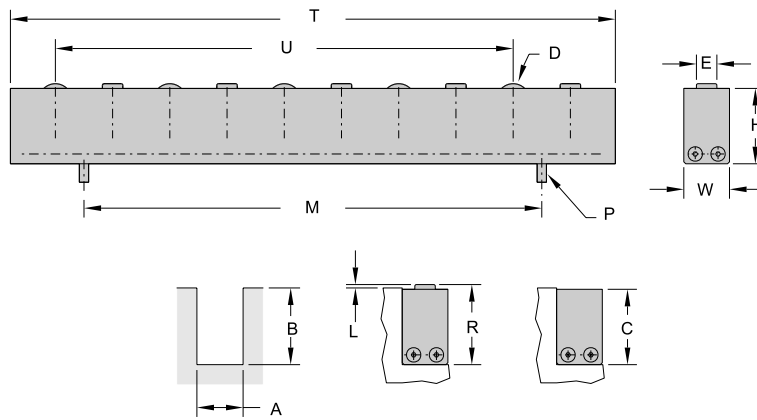
Hydraulic cam roller die lifters, type BTH, are used with heavy dies to achieve easy manual or powered die positioning. There are two sets of cam rollers installed alternately, and perpendicular to each other. The rollers also help prevent damage to the dies from sliding the die on the bolster. The lifters have separate hydraulic circuits, each one is for a different direction. This type of lifter has the capacity to carry heavy dies and to maintain height maneuverability.

Features:

- Durable solid body
- Dies can be easy positioned front to back and left to right in the press with these units
- Steel cam rollers
- Includes lifter mounting
- Safe 3500psi hydraulic pressure is used
- Lifting pistons sealed from the top - to keep them free from stamping dust and trash

To Order:

Note the type of lifter.
 If there is no size that fits existing slots, we can provide a custom design.
 For special orders the size of the slot needs to be specified. Please fill out the form on page 48.



TYPE	U-Slot Size		Dimensions							Lift parameters	
	'A'	'B'	'W'	'H'	'D'	'E'	'P'	'C'	'R'	'L'	
BTH36	1.418	2.390	1.397	2.247	1.00	.625	10-32	2.375	2.453	.063	

TYPE	Load cap.	Dimensions		No. of rollers for each direction
		'T'	'U=M'	
UNIT	lbs	in	in	
BTH36/3	2000	11.5	7.00	3
BTH36/4	3000	15.0	10.5	4
BTH36/5	3000	18.5	14.0	5
BTH36/6	4500	22.0	17.5	6
BTH36/7	4500	25.5	21.0	7
BTH36/8	6000	29.0	24.5	8
BTH36/9	6000	32.5	28.0	9
BTH36/10	6000	36.0	31.5	10
BTH36/11	8000	39.5	35.0	11
BTH36/12	8000	43.0	38.5	12
BTH36/13	9200	46.5	42.0	13
BTH36/14	9200	51.0	45.5	14
BTH36/15	10000	53.5	49.0	15
BTH36/16	10000	57.0	52.5	16
BTH36/17	12000	60.5	56.0	17